

**AUCTION PARCELS D-1 AND D-2 OFFERED AS 2 PARCELS OR AS A WHOLE
Sells at 4:00 PM at Cusseta Plaza, 2487 Lee Rd 266, Cusseta, AL, at Exit 70 on I-85.**

Total Acres: 355.485

Parcel D-1: 140 +/- Acres. GPS Address: Lafayette 20225 Veterans Memorial Pky. Lafayette AL50. On AI 50 known as Veterans Memorial Parkway, frontage is at the 35-mile marker, with 3,393.88 feet of frontage.

Parcel D-2: 197 +/- Acres. GPS Address: Lafayette 3300 County Road 16. Lafayette CR16. On CR 16 has 97.6 feet of frontage (Opelika - Dudleyville Road).

A well located, very good timber and hunting tract, with numerous streams and water.

Excellent pine timber and hardwoods for hunting and timber is approximately 17 years old and has been thinned once, ever-5th row was removed, ready now for the second thinning.

On parcel D-2 are electricity, drilled water well and a deer camp. Little Chatahospee Creek (a bold running stream of water) goes through the property on D-1.

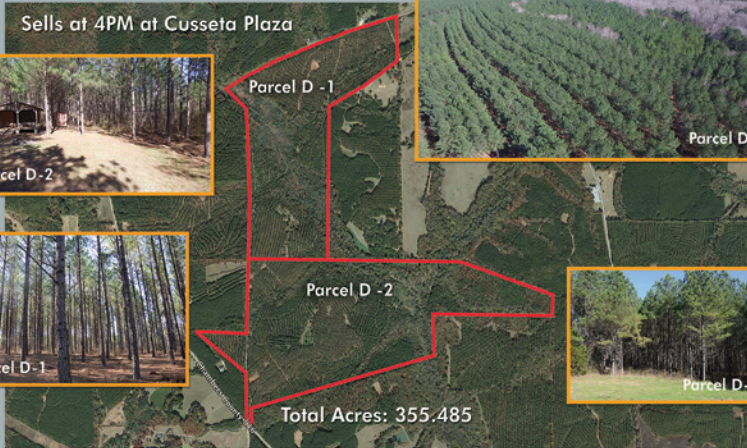
Hunting lease expires 7/1/16.

Directions:

D-1 From Lafayette, Alabama take Al. Hwy 50 west, go 5.3 miles to mile marker 35 and the property is on the left. From Camp Hill take Highway AI 50 east for 12 miles to 35-mile marker and property frontage on AI 50, gate just past mile marker on the right.

D-2 From Lafayette go 6 miles to CR 16 turn left go 1 mile to gate on left. From Camp Hill take Highway AI 50 east for 11 miles to CR 16, turn right go 1 mile to gate on left.

Sells at 4PM at Cusseta Plaza



Parcel D-1: 140 +/- Acres and Parcel D-2: 197 +/- Acres