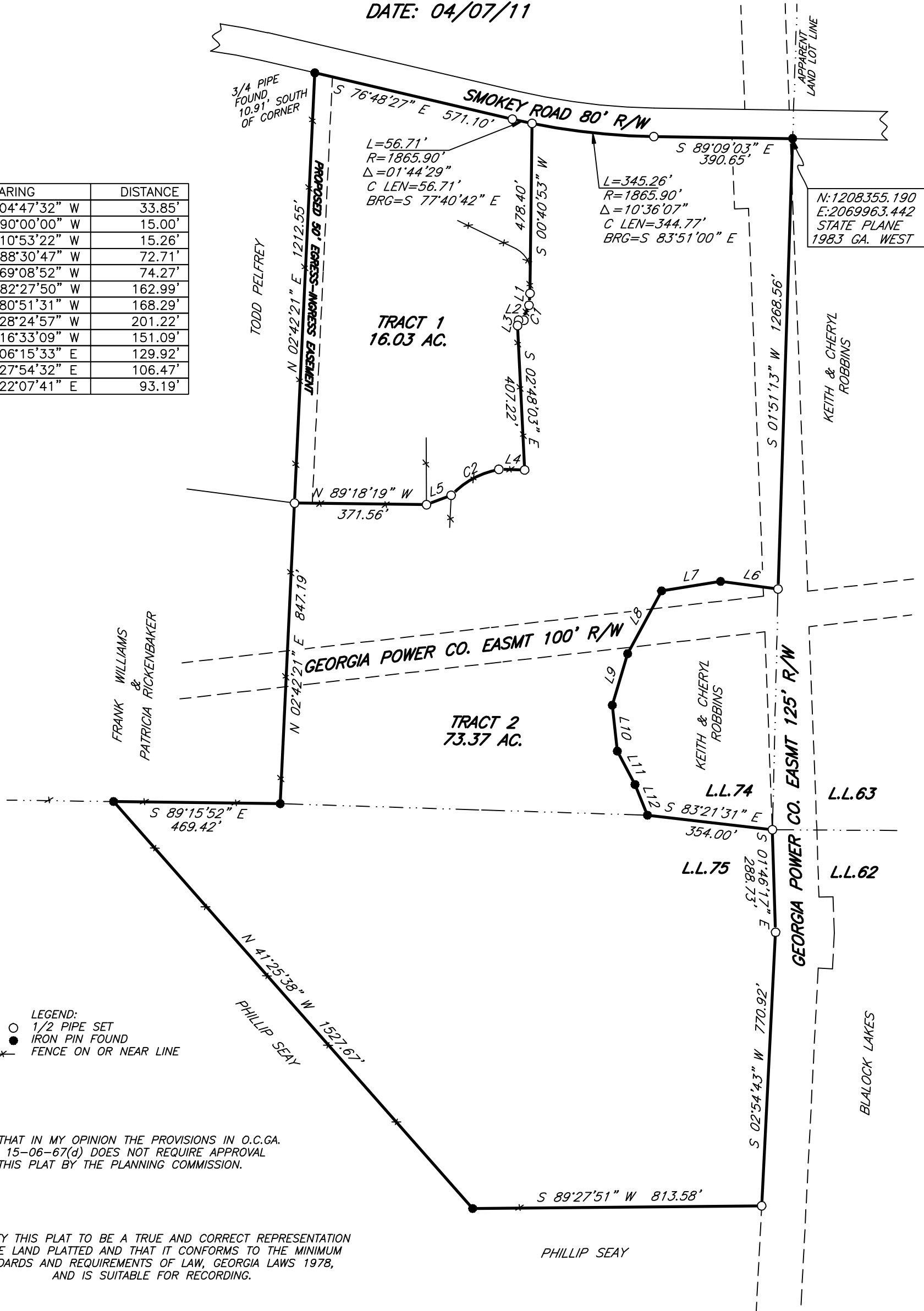


SURVEY FOR:
WAYNE STONE ESTATE
 LOCATED IN LAND LOTS 74 & 75, 3RD LAND DISTRICT
 COWETA COUNTY, GEORGIA
 SCALE: 1"=300'
 DATE: 04/07/11

LINE	BEARING	DISTANCE
L1	S 04°47'32" W	33.85'
L2	N 90°00'00" W	15.00'
L3	S 10°53'22" W	15.26'
L4	N 88°30'47" W	72.71'
L5	S 69°08'52" W	74.27'
L6	N 82°27'50" W	162.99'
L7	S 80°51'31" W	168.29'
L8	S 28°24'57" W	201.22'
L9	S 16°33'09" W	151.09'
L10	S 06°15'33" E	129.92'
L11	S 27°54'32" E	106.47'
L12	S 22°07'41" E	93.19'



I CERTIFY THAT IN MY OPINION THE PROVISIONS IN O.C.G.A. SECTION 15-06-67(d) DOES NOT REQUIRE APPROVAL OF THIS PLAT BY THE PLANNING COMMISSION.

I CERTIFY THIS PLAT TO BE A TRUE AND CORRECT REPRESENTATION OF THE LAND PLATTED AND THAT IT CONFORMS TO THE MINIMUM STANDARDS AND REQUIREMENTS OF LAW, GEORGIA LAWS 1978, AND IS SUITABLE FOR RECORDING.

CURVE	RADIUS	ARC LENGTH	CHORD LENGTH	CHORD BEARING	DELTA ANGLE
C1	113.06'	44.46'	44.18'	S 18°57'56" W	22°31'54"
C2	242.58'	155.46'	152.81'	S 61°24'48" W	36°43'08"

ERROR OF CLOSURE; GREATER THAN 1' IN 10,000
 ANGULAR ERROR: LESS THAN 6" PER ANGLE
 ADJUSTED CLOSURE: 1' = 100,000'
 COMPASS RULE ADJUSTMENT
 FIELD SURVEYOR: ADAM EVANS
 EQUIP. USED: TOPCON GTS 3B TOTAL STATION-TRIMBLE R8 GPS
 PLAT BY: LARRY EVANS
 COMP. FILE: WSTONE-040711

STATEWIDE SURVEYING COMPANY
 521 ETHEL STREET
 DOUGLAS, GEORGIA 31533
 912-384-7723